

NEW Anchorage

Ground No. 18

40°56'54.0"N, 073°54'40.0"W

40°56'51.0"N, 073°54'24.0"W

40°55'53.0"N, 073°54'40.0"W

40°55'56.0"N, 073°54'58.0"W

REVISED Anchorage

Ground No. 17

40°56'26.66"N, 073°55'12.06"W

40°56'22.54"N, 073°54'49.77"W;

40°55'56.00"N, 073°54'58.00"W

40°55'54.15"N, 073°54'46.96"W

40°54'18.43"N, 073°55'21.12"W

40°52'27.59"N, 073°56'14.32"W

40°51'34.20"N, 073°56'52.64"W

40°51'20.76"N, 073°57'31.75"W;

Manhattan

George Washington Bridge

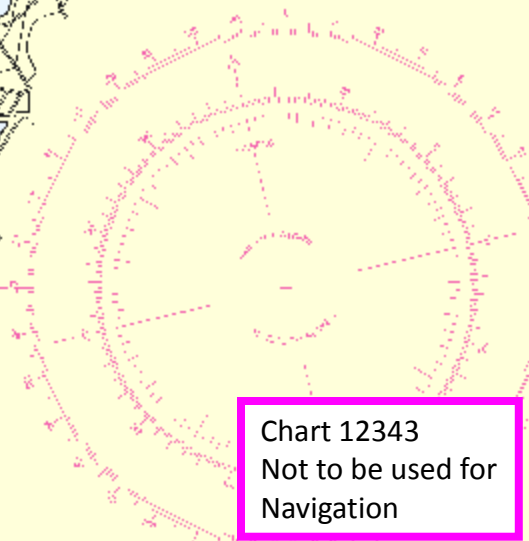
Chart 12343
Not to be used for
Navigation

WARNING
This chart contains information that is not to be used for navigation.

NO WEATHER PUBLICATIONS
This chart was published on the basis of the best available information and is not to be used for navigation.

OFFICIAL PUBLICATION
Chart 12343 is published by the Hydrographic Office, Washington, D.C.

NO SCALE
This chart is not to be used for navigation.



U.S. Coast and Geodetic Survey
This chart was compiled from the best available information and is not to be used for navigation.

NO SCALE
This chart is not to be used for navigation.

LEONA

NO DISCHARGE ZONE

NEW YORK

REVISED Anchorage
Ground No. 17
 40°56'26.66"N, 073°55'12.06"W
 40°56'22.54"N, 073°54'49.77"W;
 40°55'56.00"N, 073°54'58.00"W
 40°55'54.15"N, 073°54'46.96"W
 40°54'18.43"N, 073°55'21.12"W
 40°52'27.59"N, 073°56'14.32"W
 40°51'34.20"N, 073°56'52.64"W
 40°51'20.76"N, 073°57'31.75"W;

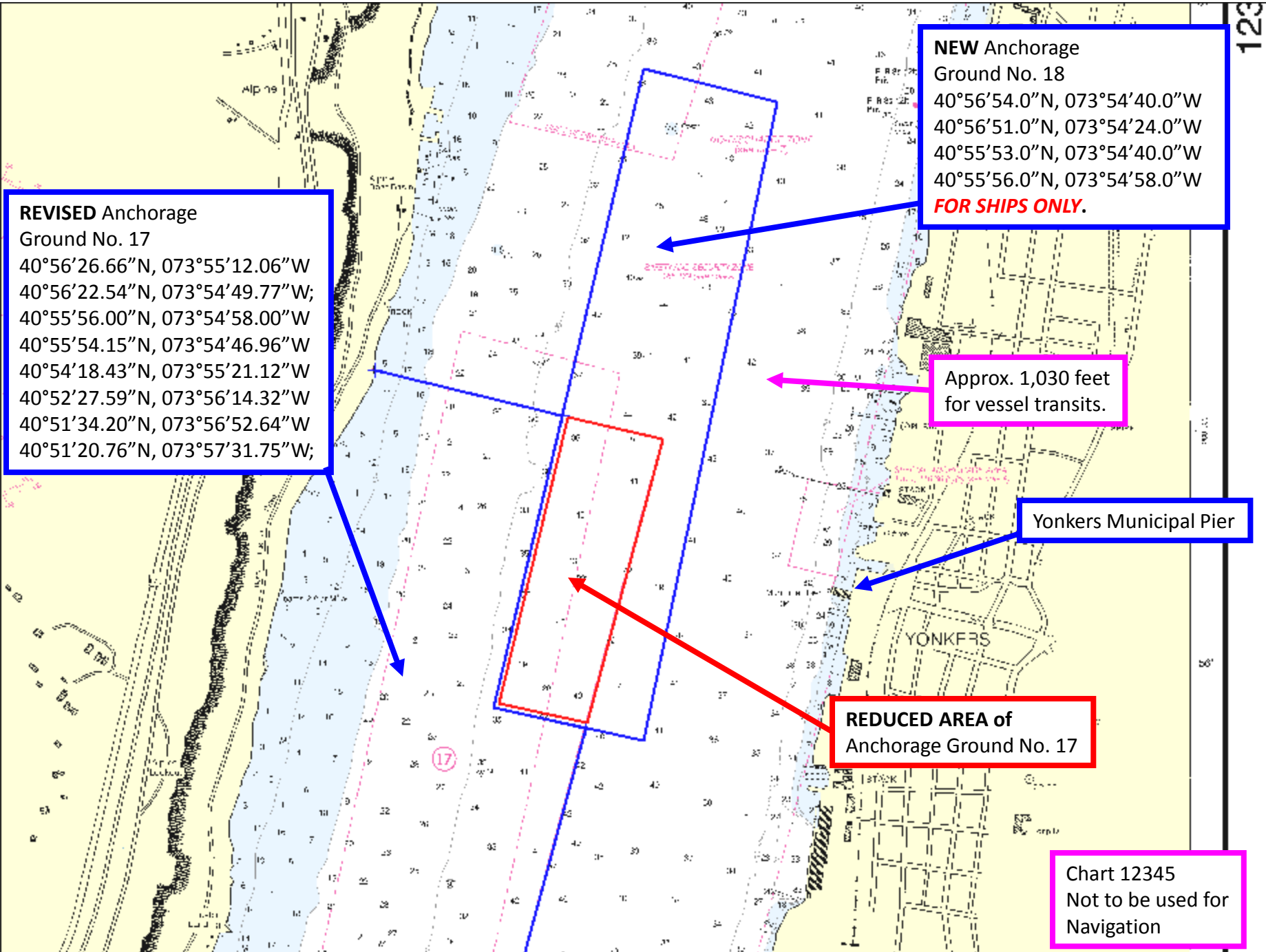
NEW Anchorage
Ground No. 18
 40°56'54.0"N, 073°54'40.0"W
 40°56'51.0"N, 073°54'24.0"W
 40°55'53.0"N, 073°54'40.0"W
 40°55'56.0"N, 073°54'58.0"W
FOR SHIPS ONLY.

Approx. 1,030 feet
for vessel transits.

Yonkers Municipal Pier

REDUCED AREA of
Anchorage Ground No. 17

Chart 12345
Not to be used for
Navigation



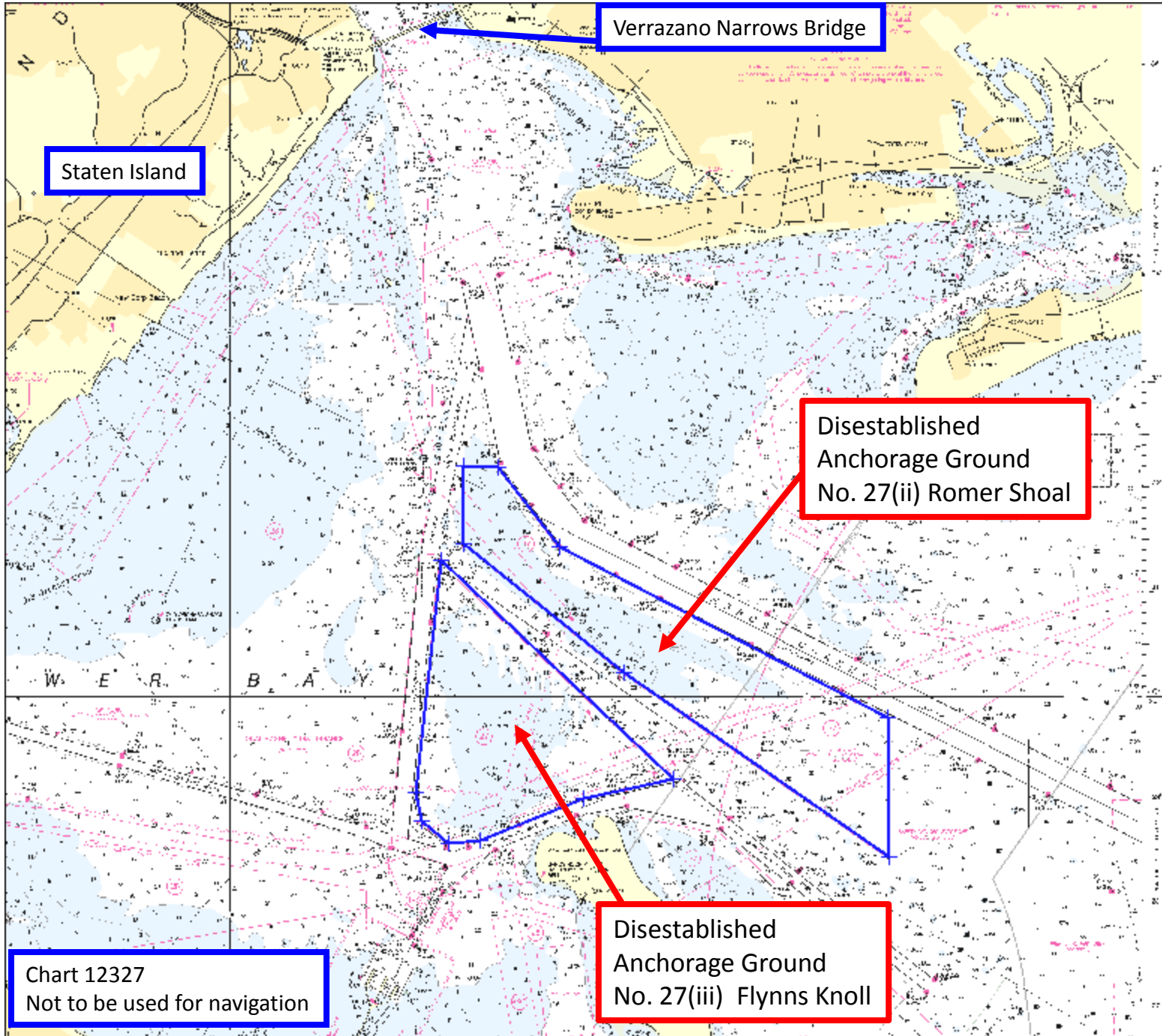
Verrazano Narrows Bridge

Staten Island

Disestablished
Anchorage Ground
No. 27(ii) Romer Shoal

Disestablished
Anchorage Ground
No. 27(iii) Flynn's Knoll

Chart 12327
Not to be used for navigation



Remaining Anchorage
Ground No. 27 coordinates:
40°28'49.27"N, 074°00'12.13"W
40°28'52.12"N, 074°00'00.56"W
40°28'40.88"N, 073°58'51.95"W
40°25'57.91"N, 073°54'55.56"W
40°23'45.55"N, 073°54'54.89"W
40°23'45.38"N, 073°58'32.10"W.
**NO CHANGE TO CHARTED
ANCHORAGE GROUND BOUNDARY.**

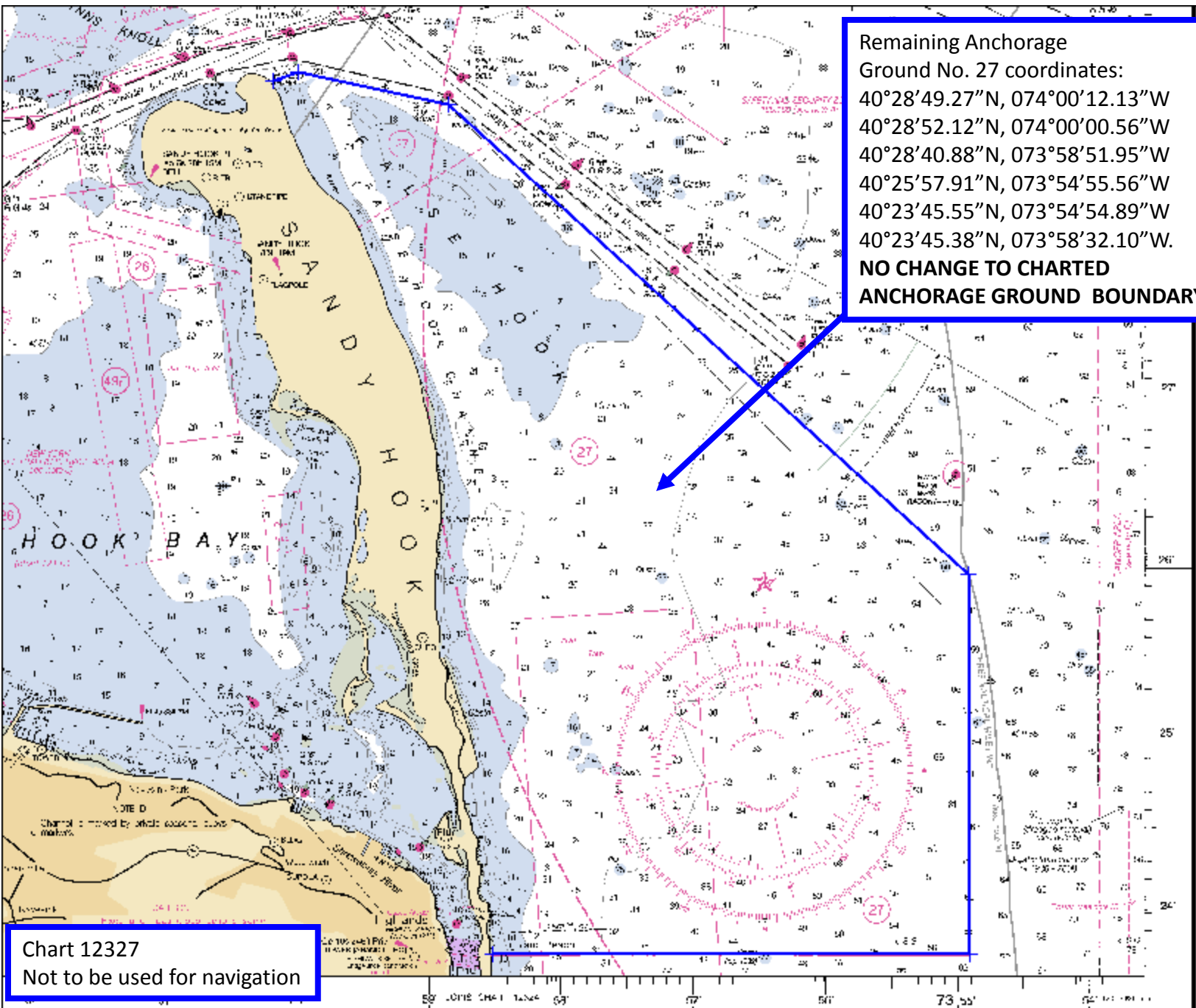


Chart 12327
Not to be used for navigation

