



COAST GUARD ADVISORY NOTICE (CGAN 2016-016)

To: Distribution

Date: December 8, 2016

From: Waterways Management Division

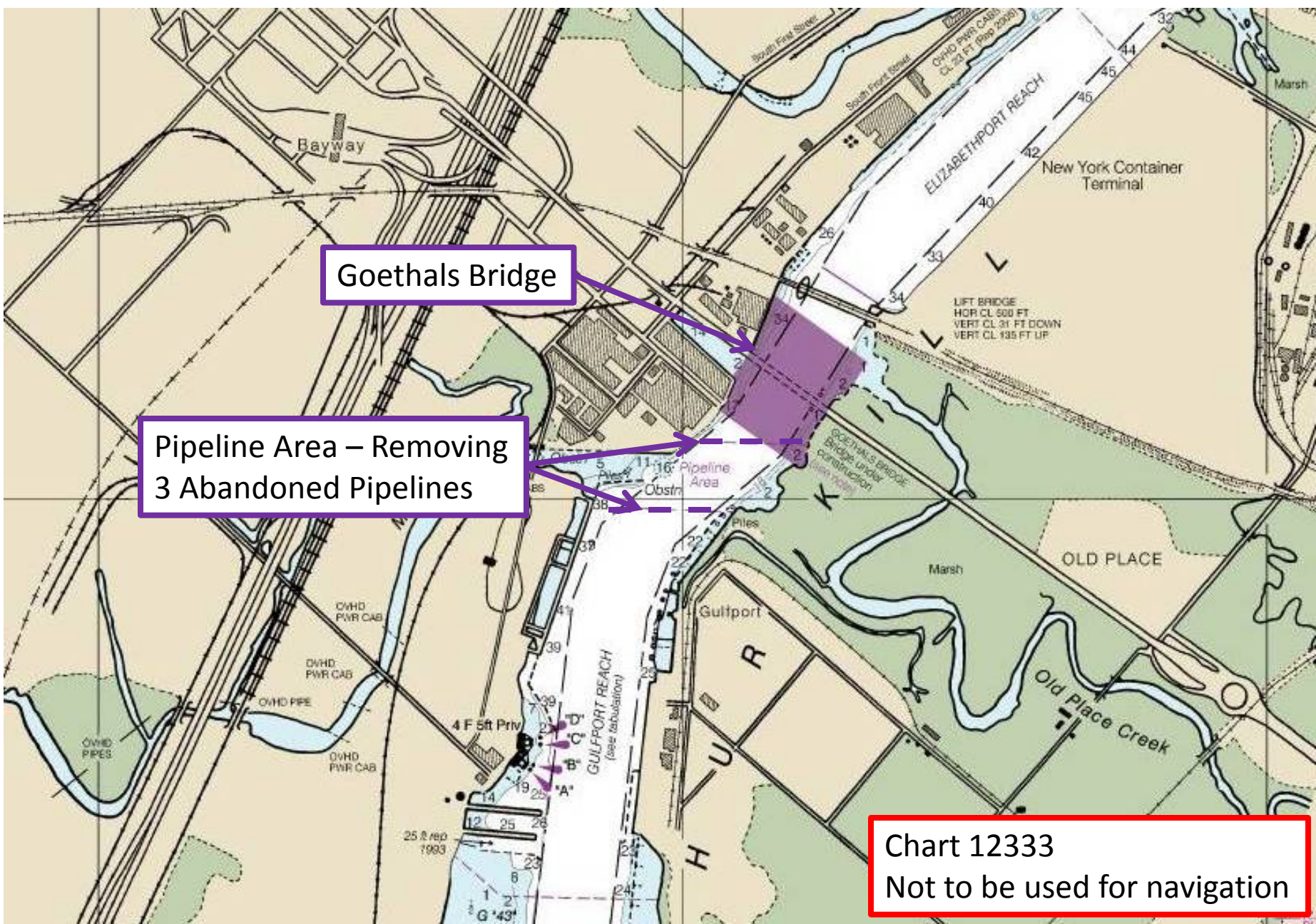
Revision No: 0

Re: Pipeline Removals within the Arthur Kill Gulfport Reach

1. Great Lakes Dredge and Dock (GLDD) will be removing three abandoned pipelines from Gulfport Reach within the Arthur Kill in the charted pipeline area located south of the Goethals Bridge (see chartlet). Work will be conducted from approximately Dec 15, 2016 to Jan 15, 2017, seven days per week from 0600-1800. Dredge operations will be conducted in a MOVE ON DEMAND status with 60 minute notice. GLDD will have a survey vessel operating with multi-beam and side-scan sonar to ensure the 35 foot channel controlling depth is not negatively impacted.
2. Diving operations will be required as part of this project. GLDD will schedule short duration (less than 20 minutes) dives outside of anticipated vessel traffic in the area, so as to not impact navigation in the waterway.
3. During pipeline removal operations, the Coast Guard will actively monitor the Regulated Navigation Area (RNA) currently in effect to enhance navigation and vessel safety for vessels transiting between Port Ivory on Elizabethport Reach and the Grasselli High Wires, north of Pralls Island, on Pralls Island Reach (see chartlet). Further modifications may be made based upon conditions in the project area.
 - a. **Direct Passage/Speed:** Any vessel transiting through the RNA must make a direct passage. No vessel may stop, moor, anchor or loiter within the RNA at any time unless they are working on the Goethals Bridge construction, or arriving to/departing from their facility berthing areas within the RNA. Movement within the RNA is subject to a "Slow-No Wake" speed limit. Vessels may not produce a wake and may not attain speeds greater than five (5) knots unless a higher minimum speed is necessary to maintain bare steerage.
 - b. **No Meeting or Overtaking:** Vessel Movement Reporting System (VMRS) users are prohibited from meeting or overtaking other vessels when transiting alongside an active work area where dredging equipment is being operated.

- c. **Channel Closure:** If a limited closure is required due to exigent circumstances, persons and vessels may request permission to enter the RNA by contacting the COTP or the COTP's on-scene representative at VTSNY on VHF CH 12 or 14 or via the VTSNY Watch Supervisor phone at 718-354-4088.
 - d. **Additional Restrictions:** Any vessels transiting in the RNA must comply with all directions given to them by the COTP or the COTP's on-scene representative. The on scene representative is any Coast Guard commissioned, warrant or petty officer who has been designated by the COTP to act on the COTP's behalf. The on-scene representative may be on a Coast Guard vessel; or other designated craft; or on shore and communicating with a VTSNY Watchstander or vessels via VHF-FM radio or loudhailer.
 - e. **Other Regulations:** All other relevant regulations, including but not limited to the Rules of the Road, as codified in 33 CFR Subchapter E, Inland Navigational Rules, remain in effect within the RNA and must be strictly followed at all times.
4. GLDD will resume sending daily email alerts with their tentative schedule one day in advance and 3-4 days in advance when possible. VTSNY will continually assess conditions in the pipeline removal zone and surrounding areas and may make further changes to navigation restrictions as necessary. Such changes will be disseminated by VTSNY, safety broadcasts, or publication online at <http://homeport.uscg.mil/newyork>
> Waterways Management.

#



Goethals Bridge

Pipeline Area – Removing
3 Abandoned Pipelines

Chart 12333
Not to be used for navigation